

# ThinkStation P330

POWER OF A  
WORKSTATION  
PRICE OF A  
DESKTOP



Lenovo™

# ThinkStation<sup>®</sup> P330 TOWER & SMALL FORM FACTOR



## POWER OF A WORKSTATION PRICE OF A DESKTOP

Mission-critical tasks require superior reliability and powerful performance; the ThinkStation<sup>®</sup> P330 leads on both counts and does it with exceptional all-around value. These redesigned workstations offer the latest high-performance Intel<sup>®</sup> Core™ i and Xeon<sup>®</sup> processors, NVIDIA<sup>®</sup> Quadro RTX™ professional graphics, with VR Ready capability, cutting-edge storage technologies, including on-board M.2, and Intel<sup>®</sup> Optane™ memory; now in a 30% smaller package.

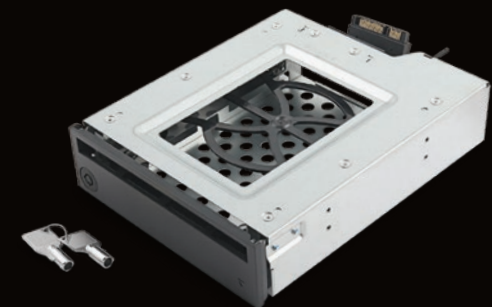
## OPTIONS & ACCESSORIES

ThinkVision P27q ▶



◀ NVIDIA<sup>®</sup> Quadro P4000

Front Access ▶  
Storage Enclosure



# Lenovo™ ThinkStation® P330 TWR & SFF

## PERFORMANCE

### Processor

Intel® Xeon® E-2100  
Up to 8th Gen Intel® Core™ i7  
with vPro

### Operating System

Windows 10 Pro for Workstations<sup>1</sup>  
Windows 10 Pro<sup>2</sup>  
Ubuntu Linux (pre-load)  
Redhat Linux (certified)

### Graphics

Up to NVIDIA® Quadro RTX™ 4000<sup>3</sup>  
Intel® UHD Graphics

### Total Memory

Up to 64GB 2666MHz, 4 DIMM Slots  
ECC/non-ECC UDIMM DDR4

### Memory DIMM Capacity

4/8/16GB 2666MHz non-ECC UDIMM  
8/16GB 2666MHz ECC UDIMM

### Total Storage

TWR<sup>4</sup>  
Max M.2 = 3 (3TB)  
Max 3.5" = 3 (12TB)  
Max 2.5" = 4 (4TB)  
SFF<sup>4</sup>  
Max M.2 = 3 (3TB)  
Max 3.5" = 1 (4TB)  
Max 2.5" = 2 (2TB)

### Storage Type Capacity

3.5" SATA 7200 rpm up to 4TB  
2.5" SATA SSD up to 1TB  
M.2 PCIe SSD up to 1TB

### Optane Support

Intel® Optane™ 32GB Memory

### Raid

0, 1, 5<sup>5</sup>, 10<sup>5</sup>

### Chipset

Intel® C246

## Power Supply

TWR  
250W 92% Efficient  
400W 92% Efficient  
SFF  
210W 85% Efficient  
260W 92% Efficient

## CONNECTIVITY

### Front Ports

(2) USB 3.1 Gen 1 (Type A)\*  
(2) USB 3.1 Gen 2 (Type A)\*\*  
(1) USB 3.1 Gen 1 (Type C)\*  
(1) Microphone  
(1) Headset  
(1) 7-in-1 Media Card Reader<sup>6</sup>  
(1) Thunderbolt™ 3 (Type-C)<sup>5, 6, 7</sup>  
(1) 1394 IEEE Firewire<sup>5, 6</sup>  
(1) eSATA<sup>5, 6</sup>

### Rear Ports

(2) USB 3.1 Gen 1 (Type A)\*  
(2) USB 2.0 (Type A)  
(3) DisplayPort™<sup>8</sup>  
(1) HDMI<sup>6</sup>  
(1) PS/2  
(1) Serial  
(1) Gigabit Ethernet  
(1) Audio Line-out

### Wi-Fi<sup>6</sup>

Intel® 9560 2x2 vPro

### Expansion Slots<sup>5</sup>

1 x PCIe x16  
1 x PCIe x4 (x16 Mechanical)  
1 x PCIe x1

## DESIGN

### Dimensions

TWR - 10.6kg (23.4lb)  
(mm): H 376 x W 165 x D 328  
(inches): H 14.8" x W 6.5" x D 12.9"  
SFF - 6kg (13.2lb)  
(mm): H 343.5 x W 92.5 x D 305.6  
(inches): H 13.5" x W 3.7" x D 12.0"

## SOFTWARE

Windows 10 Preloads  
Cyberlink® PowerDVD<sup>9</sup>  
Cyberlink® Power2Go<sup>10</sup>  
Lenovo™ Vantage  
Microsoft® Office 2016 (trial)  
Microsoft® LinkedIn

## ISV CERTIFICATIONS

3DEXperience® (CATIA®), Alias®,  
AutoCAD®, Barco®, Creo®  
HyperWorks®, Inventor®  
McKesson®, Microstation®  
NX®, Revit®, Solid Edge®,  
SolidWorks®, Teamcenter®  
Tecnomatix®, Vectorworks®

## GREEN CERTIFICATIONS

ENERGY STAR® 7.0  
EPEAT™ GOLD  
GREENGUARD®  
80 PLUS® Platinum – 400W,  
250W, 260W PSU  
80 PLUS® Bronze – 210W PSU

## OPTIONS & ACCESSORIES

ThinkVision® P27q Monitor  
NVIDIA® Quadro® P4000  
Front Access Storage Enclosure

For full list of accessories and options,  
please visit <http://accsmartfind.lenovo.com>

1 Intel® Xeon® Processors only  
2 Intel® Core® i Processors only  
3 Only available on Tower with 400W power supply  
4 Any combination of storage to equal maximum storage drives  
5 Tower only  
6 Optional  
7 Via FLEX Module  
8 2x DP as standard the 3rd DP is optional  
9 Only models with DVD/DVD RW  
10 Only models with DVD RW

## RECOMMENDED SERVICES

Lenovo™ offers a comprehensive portfolio of services to support and protect your ThinkStation® investment—so you can focus on your business, not your IT.

### Premier Support

Bypass phone menus and scripted troubleshooting to access advanced-level technicians with the expertise needed to quickly diagnose and solve problems.

### Warranty Upgrades—Onsite and Next Business Day

Maximizes PC uptime and productivity by providing convenient, fast repair service the next business day.

### Warranty Extensions (1 to 4 years total duration)

This fixed-term, fixed-cost service helps you accurately budget for PC expenses, protect your valuable investment, and potentially lower the cost of ownership over time.



Powered by Intel®  
Xeon™ processors.  
Intel Inside®. Powerful  
Productivity. Outside.

© 2018 Lenovo. All rights reserved. These products are available while supplies last. Prices shown are subject to change without notice. For any questions concerning price, please contact your Lenovo Account Executive. Lenovo is not responsible for photographic or typographic errors. Warranty: For a copy of applicable warranties, write to: Warranty Information, 500 Park Offices Drive, RTP, NC 27709, Attn: Dept. ZPYA/B600. Lenovo makes no representation or warranty regarding third-party products or services. Trademarks: Lenovo, the Lenovo logo, Rescue and Recovery, ThinkPad, ThinkCentre, ThinkStation, ThinkVantage, and ThinkVision are trademarks or registered trademarks of Lenovo. Microsoft, Windows, and Vista are registered trademarks of Microsoft Corporation. Intel, the Intel logo, Intel Inside, Intel Core, and Core inside are trademarks of Intel Corporation in the U.S. and other countries. Other company, product, and service names may be trademarks or service marks of others.

\* The actual transfer speed of the USB 3.1 Gen1 will vary and, depending on many factors, such as the processing capability of host and peripheral devices, file attributes and other factors related to system configuration and your operating environments, will be slower than a speed of 5Gbit/s.

\*\* The actual transfer speed of the USB 3.1 Gen2 will vary and, depending on many factors, such as the processing capability of host and peripheral devices, file attributes and other factors related to system configuration and your operating environments, will be slower than a speed of 10Gbit/s.